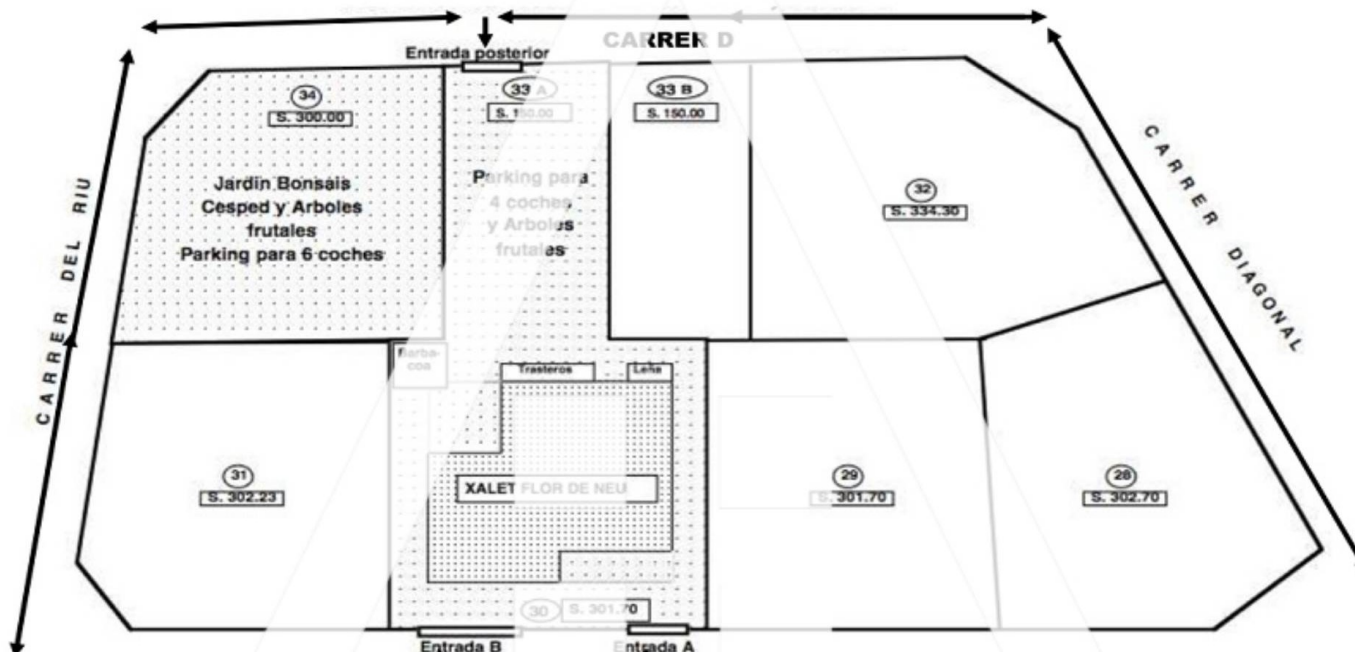


ESQUEMA GENERAL

Parcelas N° 30, N° 33 A y N° 34 = 751,70 M2
 Metros construidos = 322,91 M2



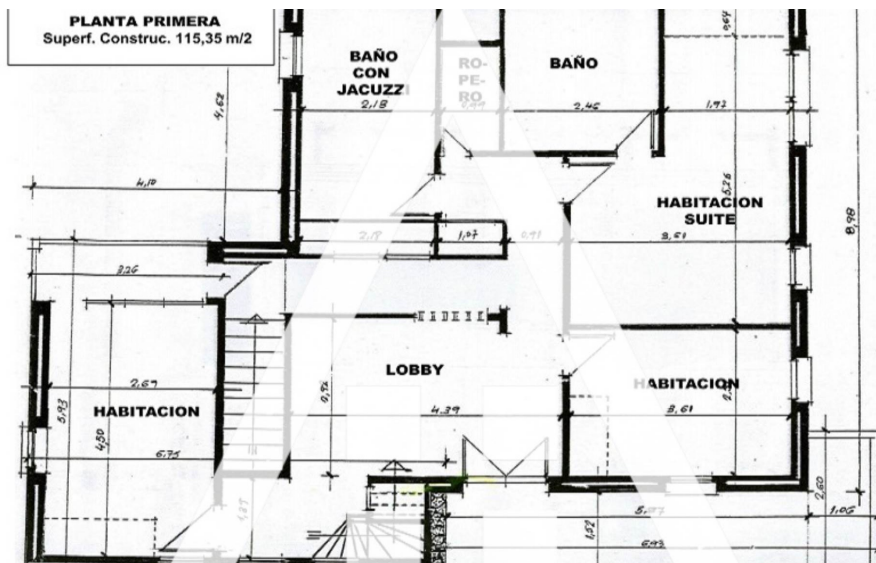
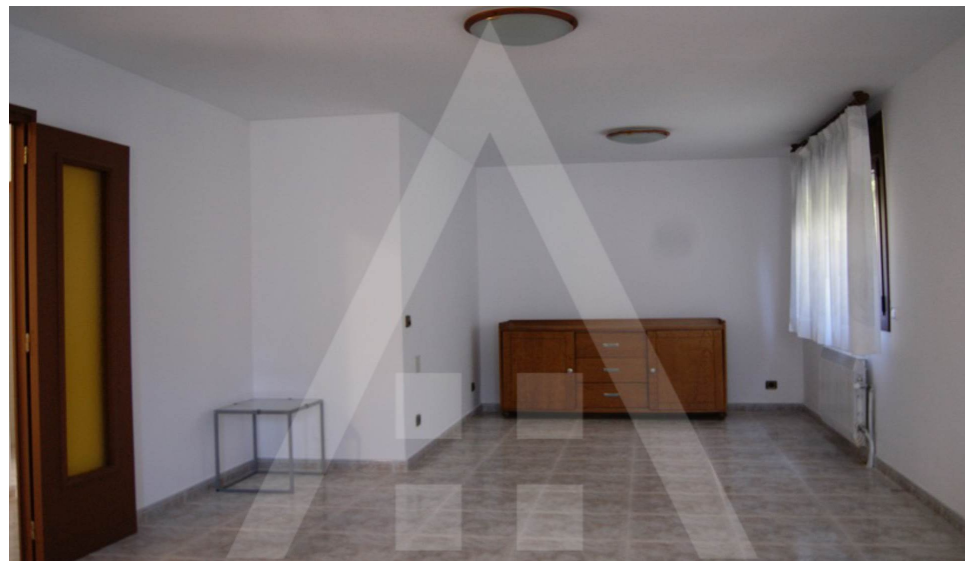
-  5
-  4
-  4
-  322
- Pal

322 m2 built on a 751 m2 plot, an old and very solid construction, with 3 floors and a nice garden at the back with barbeque area, where more cars can be parked. The ground floor has a sheltered entrance leading to the upper floor and to the entrance hall, corridor, independent kitchen, laundry, 1 bedroom, 1 full bathroom and a large lounge dining with fireplace. The upper floor, accesible from the lower floor, contains a hall...

VENDA

VALORS CC

£1,3500.00



ref. 43462

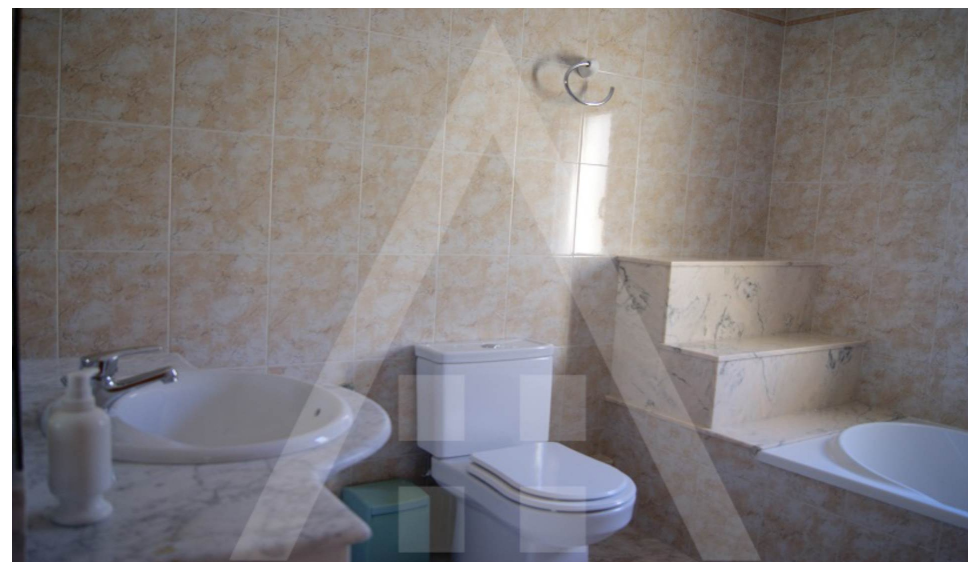
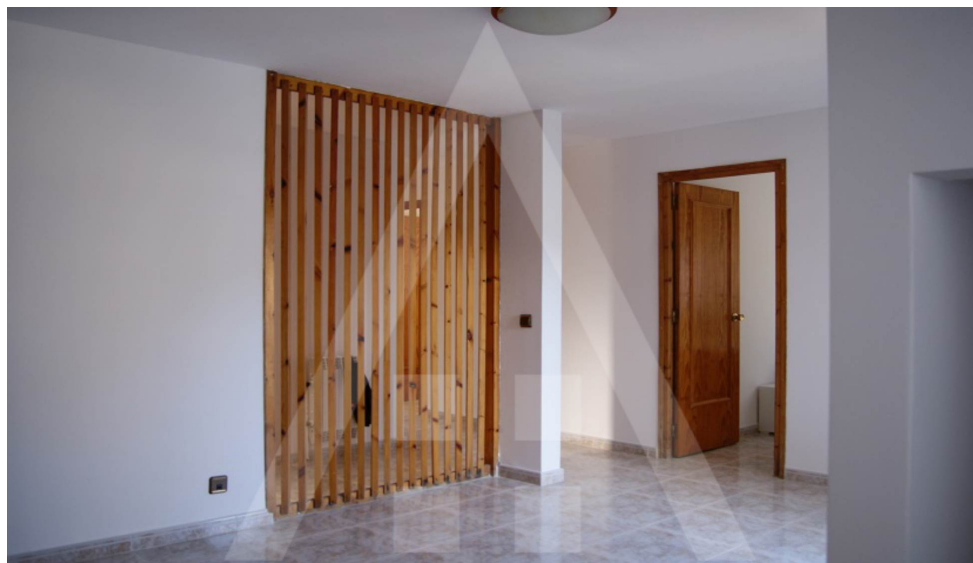
andorravalors.com

+375 336063 whatsapp

VENDA

VALORS CC

£1,3500.00



ref. 43462

andorravalors.com

+375 336063 whatsapp